

Cambridge
International
AS & A Level

Cambridge International Examinations
Cambridge International Advanced Subsidiary and Advanced Level

GEOGRAPHY

9696/32

Paper 3 Advanced Human Options

October/November 2017

INSERT

1 hour 30 minutes

READ THESE INSTRUCTIONS FIRST

This Insert contains all the Figures referred to in the questions.



This document consists of **5** printed pages and **3** blank pages.

Fig. 1 for Question 1

Artificial (inorganic) fertiliser use and rice yield in Indonesia, an LEDC/NIC in Asia, 1970–2010

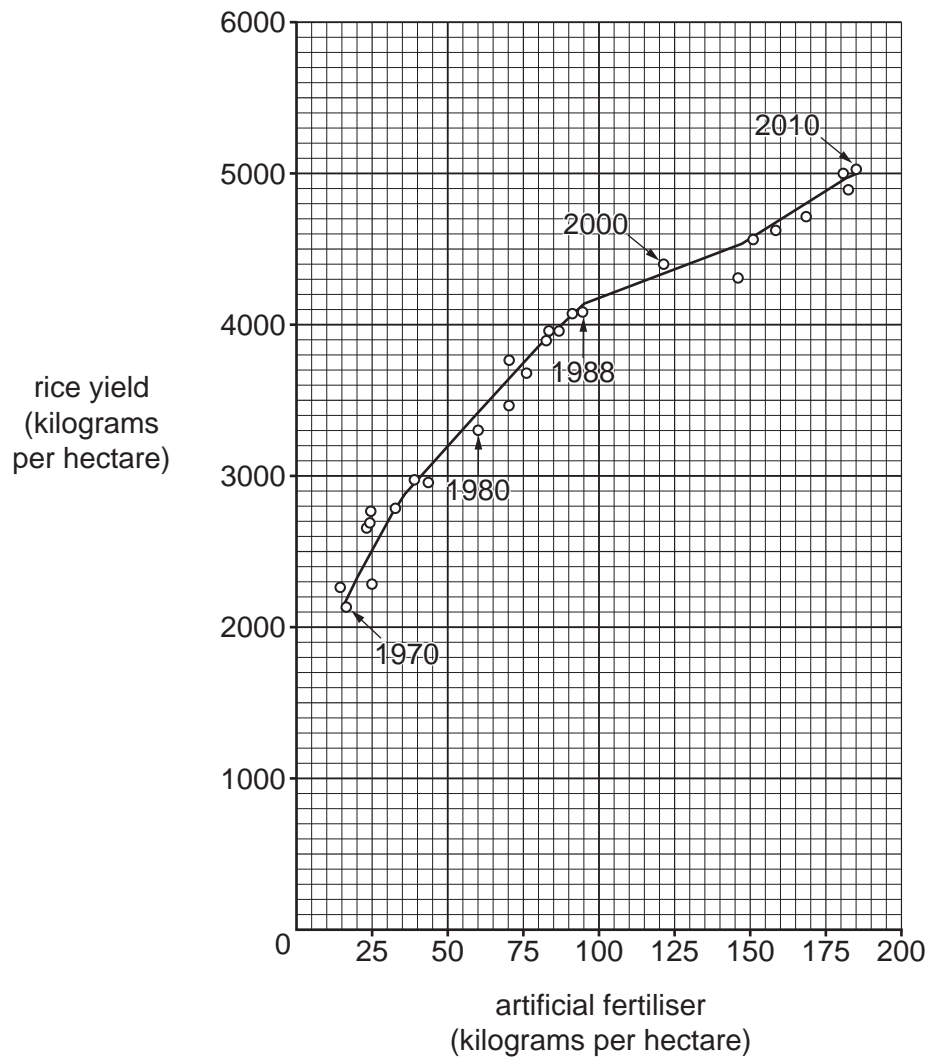


Fig. 2 for Question 4

Estimated percentage emissions of sulfur dioxide (SO₂) and nitrogen oxides (NO_x), in one year, by source, in an MEDC

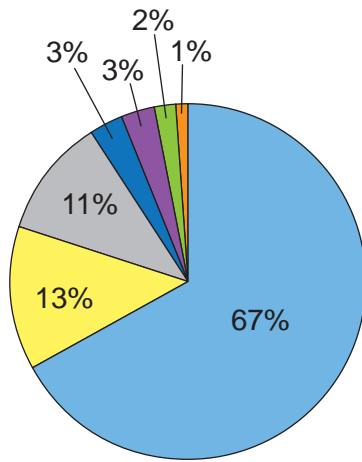


Fig. 2A

Sulfur dioxide

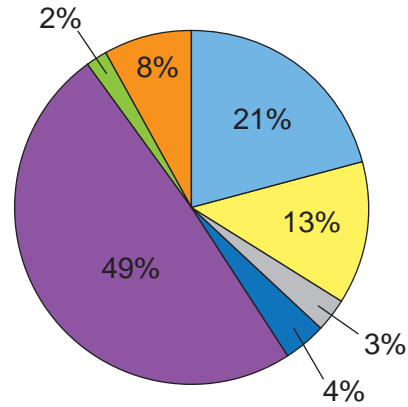


Fig. 2B

Nitrogen oxides

Key

- power generation
- industry
- oil refining
- domestic
- transport
- agriculture
- other

Fig. 3 for Question 6

One cartoonist's view of the hidden environmental impacts of cruise tourism

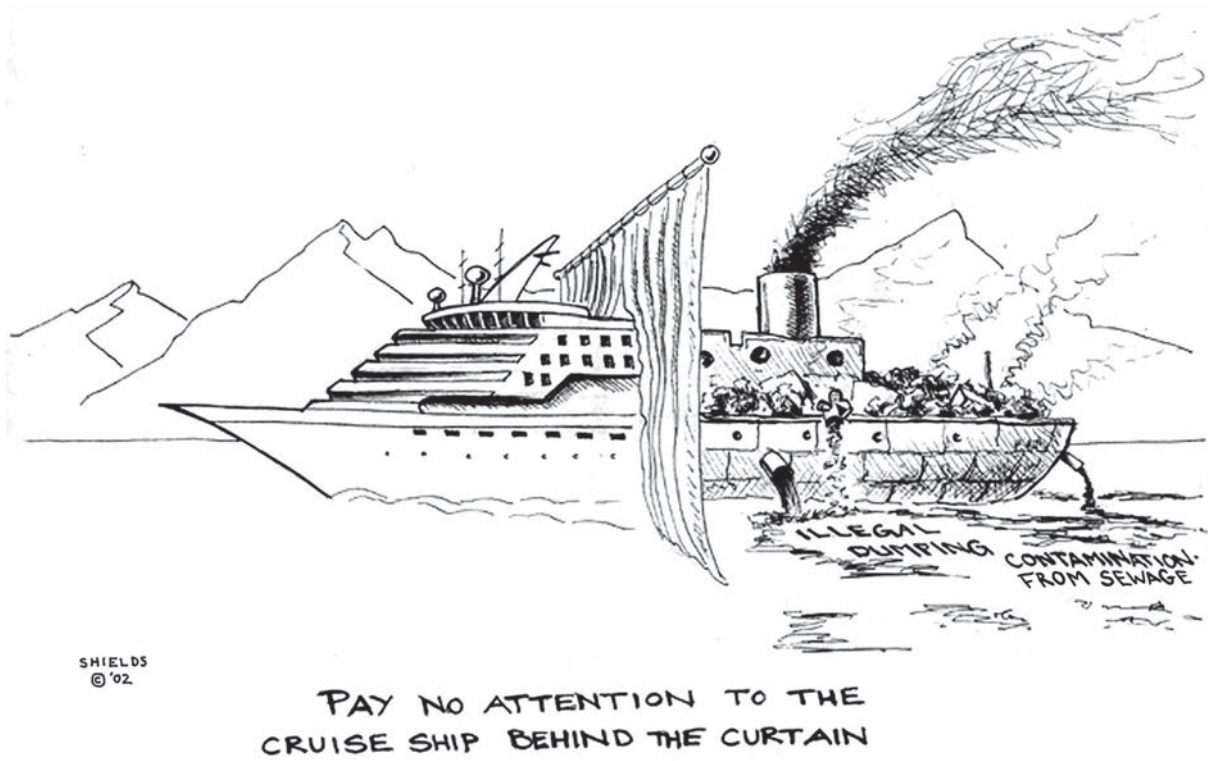
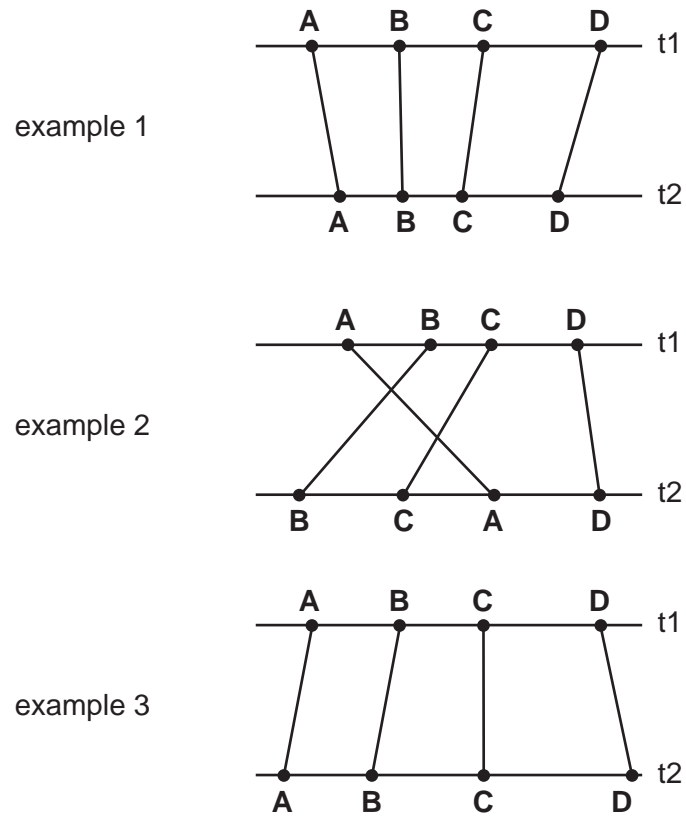


Fig. 4 for Question 8

Changes over time in the relative development of regions in a four region system

HIGH level of development LOW



Key

t time
ABCD regions

BLANK PAGE

BLANK PAGE

BLANK PAGE

Permission to reproduce items where third-party owned material protected by copyright is included has been sought and cleared where possible. Every reasonable effort has been made by the publisher (UCLES) to trace copyright holders, but if any items requiring clearance have unwittingly been included, the publisher will be pleased to make amends at the earliest possible opportunity.

To avoid the issue of disclosure of answer-related information to candidates, all copyright acknowledgements are reproduced online in the Cambridge International Examinations Copyright Acknowledgements Booklet. This is produced for each series of examinations and is freely available to download at www.cie.org.uk after the live examination series.

Cambridge International Examinations is part of the Cambridge Assessment Group. Cambridge Assessment is the brand name of University of Cambridge Local Examinations Syndicate (UCLES), which is itself a department of the University of Cambridge.